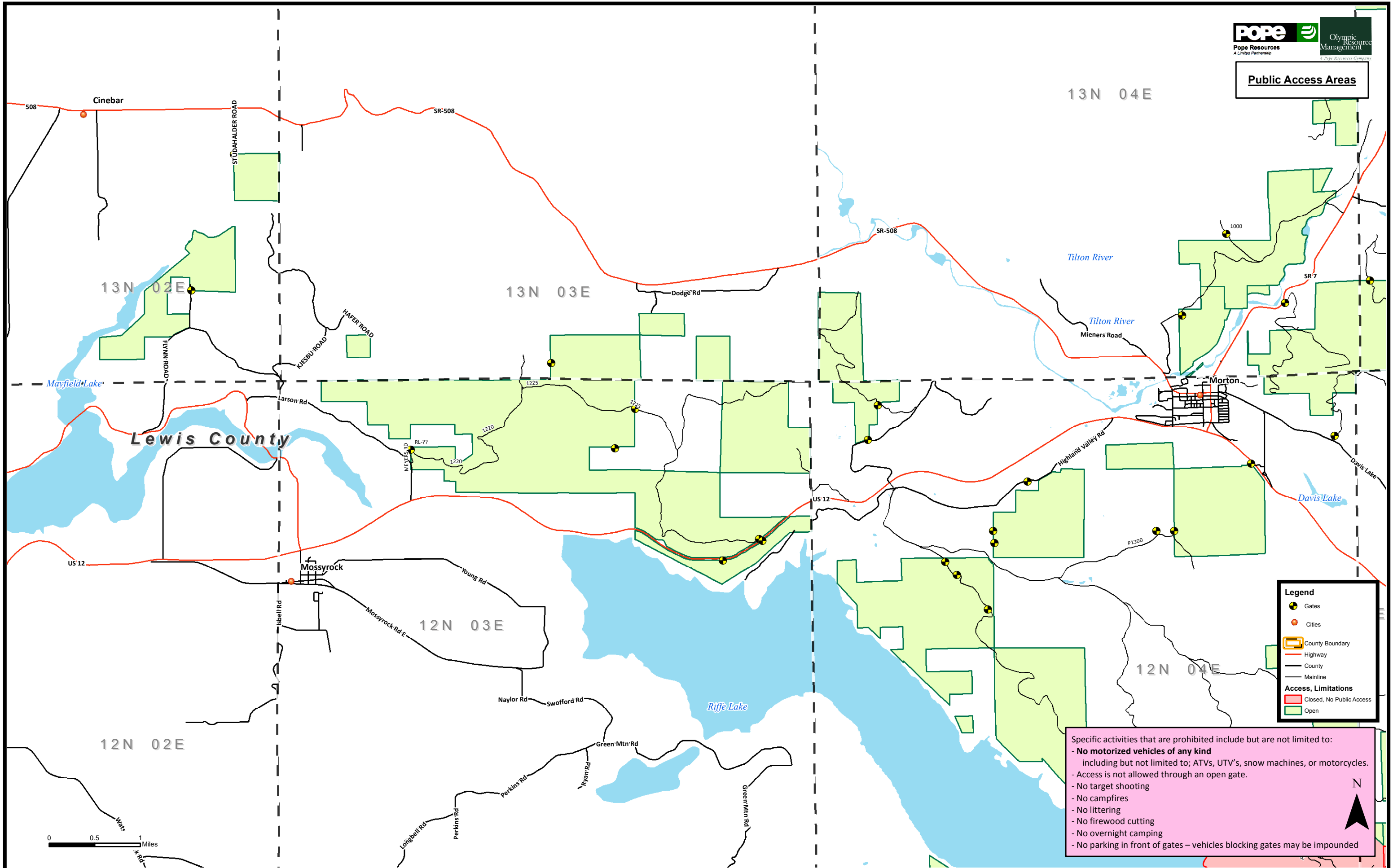





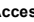




**Public Access Areas**



**Legend**

-  Gates
-  Cities
-  County Boundary
-  Highway
-  County
-  Mainline

**Access, Limitations**

-  Closed, No Public Access
-  Open

Specific activities that are prohibited include but are not limited to:

- **No motorized vehicles of any kind** including but not limited to; ATVs, UTV's, snow machines, or motorcycles.
- Access is not allowed through an open gate.
- No target shooting
- No campfires
- No littering
- No firewood cutting
- No overnight camping
- No parking in front of gates – vehicles blocking gates may be impounded

