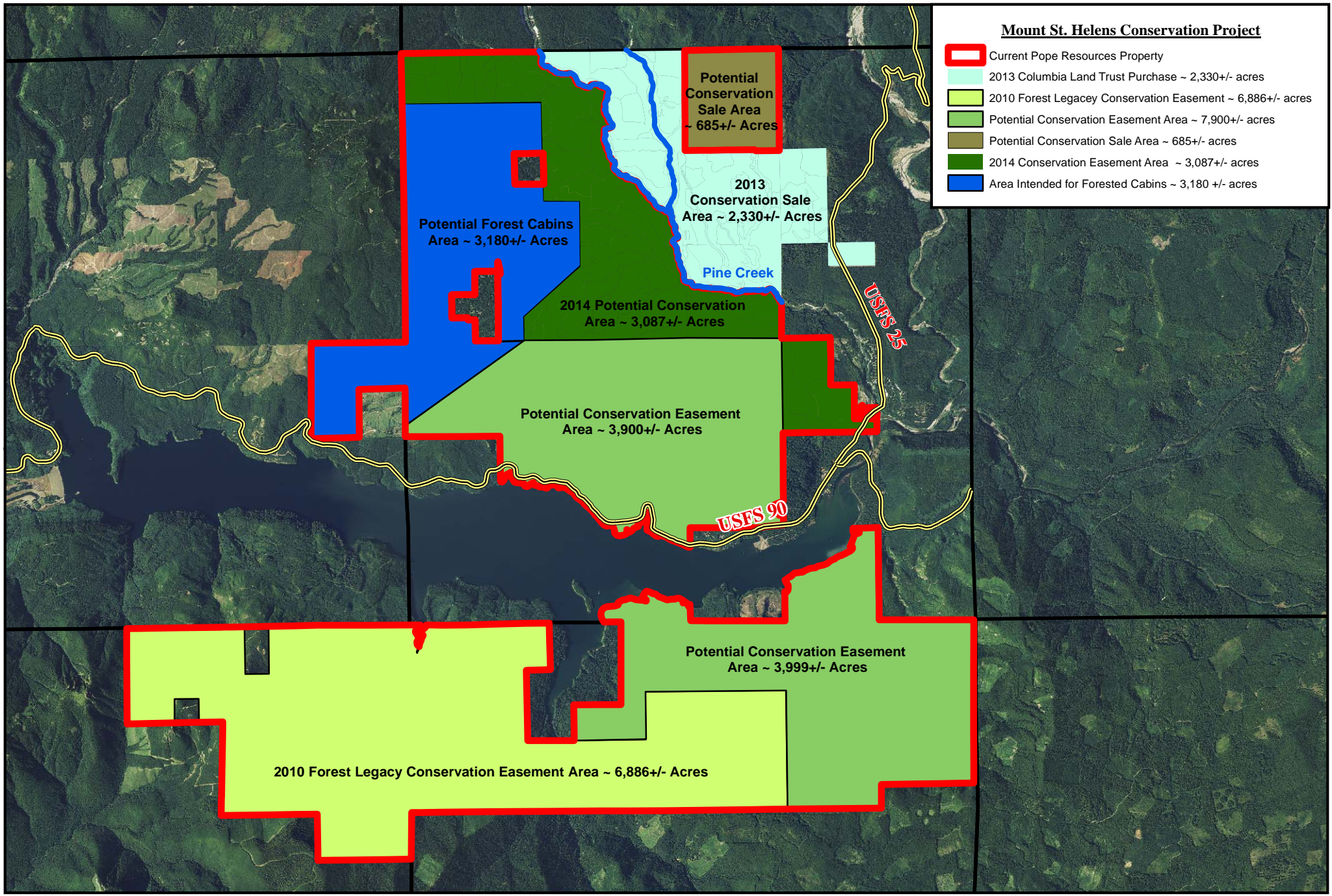


Mount St. Helens Conservation Project

-  Current Pope Resources Property
-  2013 Columbia Land Trust Purchase ~ 2,330+/- acres
-  2010 Forest Legacy Conservation Easement ~ 6,886+/- acres
-  Potential Conservation Easement Area ~ 7,900+/- acres
-  Potential Conservation Sale Area ~ 685+/- acres
-  2014 Conservation Easement Area ~ 3,087+/- acres
-  Area Intended for Forested Cabins ~ 3,180 +/- acres



Mount St. Helens Conservation Project - February 2014



AERIAL PHOTO FROM 2011

